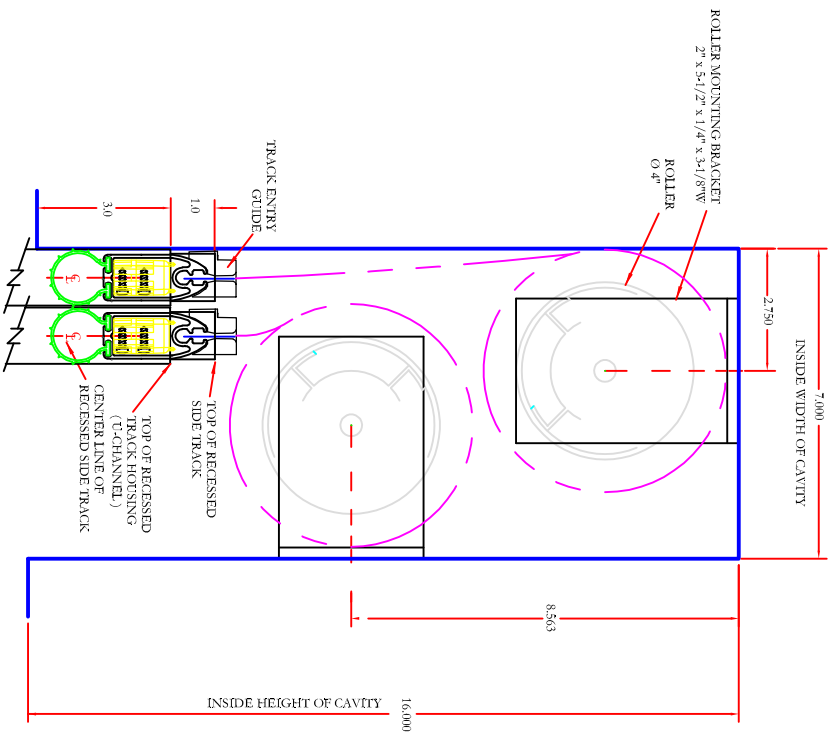
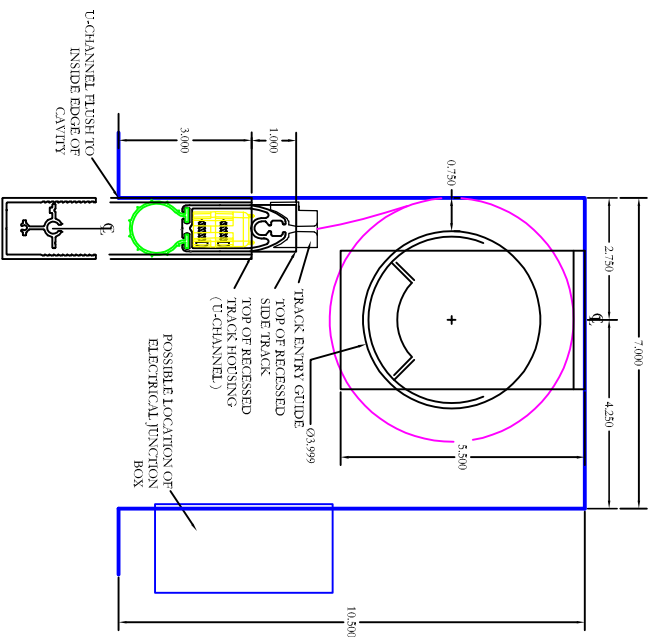


COMPARISON BETWEEN A SINGLE 4 INCH ROLLER IN A MINIMUM CAVITY AND DOUBLE 4 INCH ROLLERS STACKED IN A MINIMUM CAVITY



PLACEMENT OF 2 - 4" ROLLERS IN A CAVITY STACKED ONE ABOVE THE OTHER WITH RECESSED SIDE TRACK



PLACEMENT OF 4" ROLLER, 5-1/2" ROLLER MOUNTING BRACKET AND RECESSED SIDE TRACK

- NOTES:
1. DEPTH OF CAVITY BASED ON THE UNIVERSAL SLIDE BAR AND A 1/4 INCH BOTTOM SEAL.
 2. ALL DIMENSIONS ARE GIVEN IN INCHES.
 3. INSIDE CAVITY DIMENSIONS ARE THE SMALLEST THAT CAN BE USED TO ALLOW THE BOTTOM BEAD TO CLOSE UP INSIDE THE CAVITY SPACE. UNDER NO CIRCUMSTANCES ARE THE CAVITIES TO BE MADE SMALLER THAN SHOWN.

Rev #	Description of Revision	Approved By / Date	Rev Date
Rev 02	Change single roller cavity to new cavity size	N.D.R.	02/18/16
Rev 01	Addition of the Track Entry Guides	N.D.R.	01/19/16

Creator:	Date:	Approved By / Date:
N.D.R.	03/25/2014	

Drawing Title:	Scale:
PSEXECSTACKEDDUAL4INCHROLLERS01	1 : 1