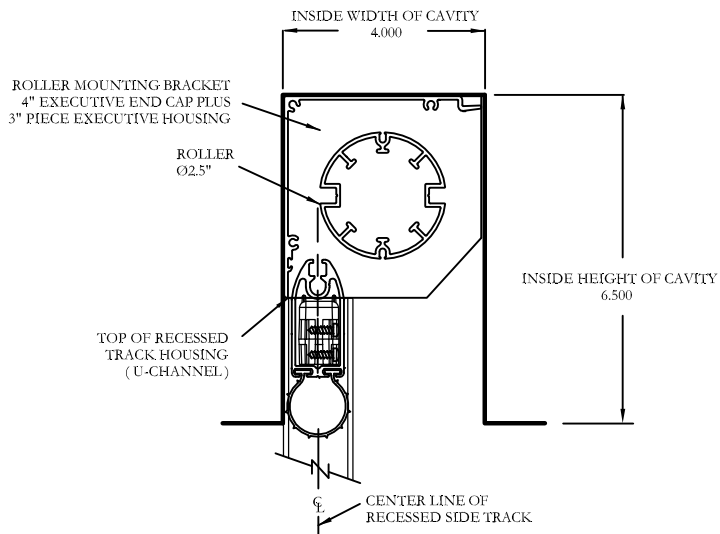


# Recessed Roller Placement Details - Minimum Cavity Size for 2-1/2" Roller



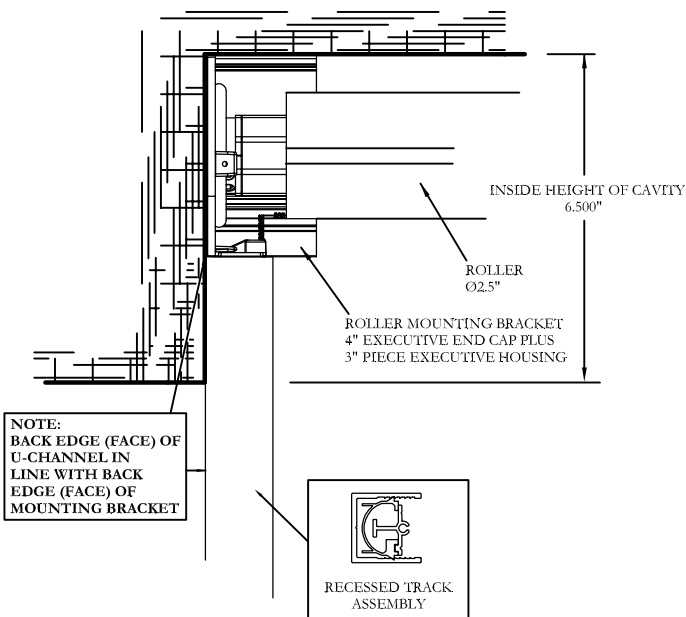
**PLACEMENT OF 2-1/2" ROLLER,  
4" ROLLER MOUNTING BRACKET  
AND RECESSED SIDE TRACK**

## PRODUCT LIMITATION

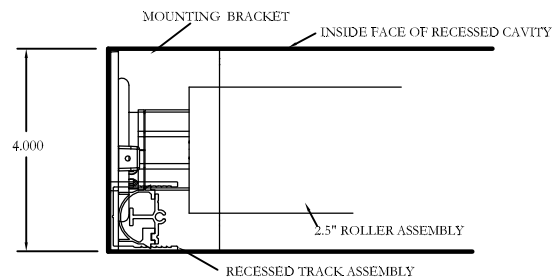
**SIZE LIMITATION FOR THE 2-1/2 INCH ROLLER IS:  
10 FEET (Wide) x 8 FEET (High/Pull Length)**

### IMPORTANT NOTE(S):

1. THE DIMENSIONS GIVEN FOR THE CAVITY ARE THE MINIMUM THAT CAN BE ALLOWED.
2. UNDER "NO" CIRCUMSTANCES ARE THE INTERIOR DIMENSIONS OF THE CAVITY TO BE MADE SMALLER.
3. THE CAVITY DIMENSIONS SHOWN ARE FOR USE WITH A 0.75" SLIDE BAR BRUSH PILE. ONLY AVAILABLE COLOR IS BLACK.



**RELATIONSHIP OF THE  
SIDE TRACK U-CHANNEL  
TO THE 4" MOTOR MOUNTING BRACKET**



**RELATIONSHIP OF U-CHANNEL  
TO MOTOR BRACKET IN A MINIMUM  
RECESSED CAVITY C/W 2.5" ROLLER**

All dimensions are given in inches.

Discription of Revisions:		
1. Change Slide Bar and Probe to Universal Version.		Dated: 12/12/13
Creator:	Date:	Revision:
NDR	02/08/2010	Rev: 01
Drawing Title:		
<b>PSEXECINSTALLMINCAVITYSIZE2.5INCH01</b>		
© 2010 Phantom Mfg. Intl Ltd.		Scale:
		1:1