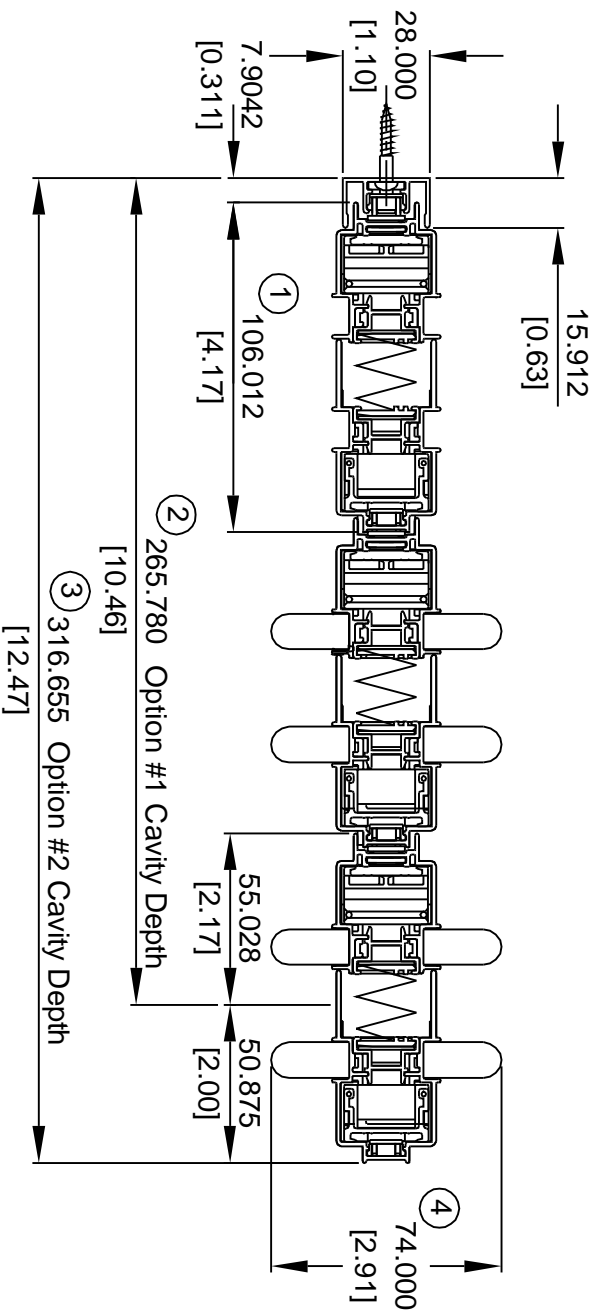


Phantom Infinity Screen Specifications

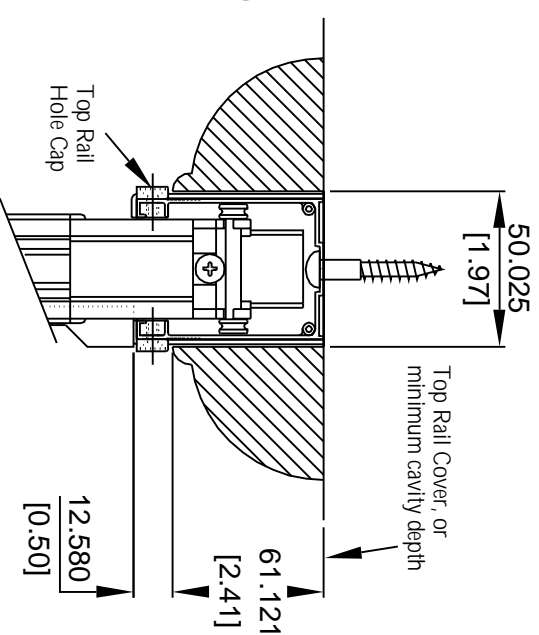
Recessed Cavity Considerations

Dimension Note(s):

1. Dimensions on top given in millimetres
2. Dimensions on bottom given in inches
3. Scale 1:1
4. Conversion factor 1"=25.4mm



HORIZONTAL CROSS SECTION



VERTICAL CROSS SECTION

Design Information:

- ① This is the SPACER PANEL. NSO length is the depth of the cavity, either Option #1 or #2, less the depth of the catch frame (0.311") 4.17" is the overall depth of a typical single panel
- ② Cavity Depth - Option #1. This allows handle access, from outside of the cavity
- ③ Cavity Depth - Option #2. This completely conceals the panels inside the cavity
- ④ This is the width of a panel with handles. Allow at least 0.5" to that width for cavity width
- ⑤ To determine cavity size, using more than 2 panels per side, add 4.17" per additional panel to Option #1 or #2. Maximum panel pull width range is 39.375"

Note(s):

1. A minimum distance of 0.5" must be maintained for access to the Top Rail Hole Cap